

LRP in Endothelial Cells A Little Goes a Long Way

Dudley K. Strickland, Selen C. Muratoglu

Endothelial cells are highly heterogeneous¹ and participate in angiogenesis, an integrated set of responses in which new blood vessels are formed from existing ones. During angiogenesis, endothelial cells exhibit increased migration and proliferation² and contribute to the reorganization of the extracellular matrix. Angiogenesis occurs during embryonic development and is also initiated during wound healing and pathological conditions, such as ischemia. Although most often the revascularization of ischemic tissues is highly beneficial, under certain conditions, it can be harmful. For example, pathological angiogenesis in the retina during diabetic retinopathy can result in blindness.³ Several molecules influence angiogenesis, including vascular endothelial growth factor,⁴ Notch,⁵ and Wnt.⁶ In this edition of *Atherosclerosis, Thrombosis, and Vascular Biology*, Mao et al⁷ identify another key player in this process: the low-density lipoprotein receptor–related protein 1 (LRP1) by demonstrating a significant role for LRP1 in orchestrating angiogenesis during retinal neovascularization.

See accompanying article on page 350

LRP1, is a highly efficient endocytic as well as a signal transducing receptor that binds multiple ligands,^{8–11} and modulates signaling pathways by regulating the extracellular levels of growth factors and binding adaptor molecules to its intracellular domain (ICD). LRP1 plays an important role in the development^{12,13} and maintenance of the vasculature.^{14,15} Deletion of the *Lrp1* gene in mice results in early embryonic lethality¹² because of extensive hemorrhaging occurring around E13.5.¹³ The underlying vascular defect results from a failure to recruit and maintain vascular smooth muscle cells and pericytes of vessels resulting in extreme dilation of the aorta with a thin and disorganized smooth muscle cell layer and discontinuity of the vascular endothelium. Interestingly, the phenotype observed for *Lrp1*^{-/-} embryos resembles that of mice genetically deficient in sphingosine-1-phosphate receptor S1PR1. Like the *Lrp1*^{-/-} embryos, the *S1pr1*^{-/-} embryos also exhibit embryonic hemorrhage due to failure to recruit

vascular smooth muscle cells and pericytes.¹⁶ This suggests that LRP1 might regulate the S1P signaling pathway.¹³ LRP1 is also required for appropriate vascular development in zebrafish, where loss of *Lrp1a* results in a disrupted vascular phenotype associated with excess bone morphogenic protein signaling.¹⁷

LRP1 is ubiquitously expressed in numerous cell types, including brain endothelium, neurons, smooth muscle cells, astrocytes, macrophages, fibroblasts, and hepatocytes.¹⁸ Although LRP1 is expressed in high levels in most cells, protein levels in the endothelium are low. Its expression is regulated by a variety of pathological conditions, such as hypoxia^{19–21} and Alzheimer disease,²² or by changes in physiological conditions, such as aging.²³ The relatively low level of LRP1 expression in endothelium is tightly regulated by physiological conditions reflecting its important role in this tissue. The first role identified for endothelial LRP1 occurs at the blood–brain barrier, where LRP1 functions to avert accumulation of amyloid- β in brain which is a key event in Alzheimer disease pathogenesis.²³ In addition to its endocytic and clearance role of amyloid- β in the brain, in endothelial cells, LRP1 ligands may also undergo transcytosis.^{24,25} Although some studies contradict a role for LRP1 in mediating the efflux of amyloid- β across the blood–brain barrier,^{26,27} an elegant study using a brain endothelial-specific LRP1 knockout mouse model convincingly demonstrated the importance of this function for endothelial LRP1 in transporting amyloid- β across blood–brain barrier.²⁸

A second function for LRP1 expressed in the endothelium is revealed in this study. Using a mouse model of oxygen-induced retinopathy, Mao et al⁷ found that mice in which LRP1 is selectively deleted in endothelial cells display significantly more neovascularization response in the retina under hypoxic stress. To address the potential mechanisms involved, Mao et al⁷ discovered that LRP1 directly interacts with poly(ADP-ribose) polymerase-1 (PARP-1) and colocalizes with this molecule in the nucleus. PARP-1 is a ubiquitous nuclear DNA base repair enzyme²⁹ that is activated in response to DNA damage in eukaryotes.³⁰ In the nucleus, activated PARP-1 catalyzes the transfer of ADP-ribose from nicotinamide adenine dinucleotide⁺ onto nuclear acceptor proteins, including histones and PARP-1 itself.³¹ This process initiates chromatin relaxation and subsequent recruitment of DNA repair proteins. These conformational changes in chromatin lead to diverse biological processes, including chromatin remodeling, transcriptional regulation, DNA repair, cell proliferation, and apoptosis.³²

Because mature forms of LRP1 are located on the plasma membrane and within endosomal compartments, and because PARP-1 is primarily found within the nucleus, the question

From the Center for Vascular and Inflammatory Disease (D.K.S., S.C.M.), Departments of Surgery (D.K.S.), and Physiology (D.K.S., S.C.M.), University of Maryland School of Medicine, Baltimore.

Correspondence to Dudley K. Strickland, PhD, Center for Vascular and Inflammatory Disease, University of Maryland School of Medicine, 800 W. Baltimore St, Baltimore, MD 21201. E-mail dstrickland@som.umaryland.edu

(*Arterioscler Thromb Vasc Biol.* 2016;36:213–216.

DOI: 10.1161/ATVBAHA.115.306895.)

© 2016 American Heart Association, Inc.

Arterioscler Thromb Vasc Biol is available at <http://atvb.ahajournals.org>

DOI: 10.1161/ATVBAHA.115.306895

arises as to how these 2 molecules could colocalize. The answer may lie in the fact that LRP1 undergoes regulated intramembrane proteolysis. Regulated intramembrane proteolysis is a process in which sequential proteolysis of a transmembrane protein ultimately leads to release of its ICD. May et al³³ demonstrated that the LRP1-ICD is released by presenilin-1 after shedding of the ectodomain in an event that is enhanced by activation of protein kinase C, but not influenced by LRP1 ligands (Figure, A). Regulated intramembrane proteolysis of LRP1 has at least 2 major consequences that have been well defined. First, release of the LRP1-ICD suppresses inflammation by reducing the transcription of lipopolysaccharide-inducible genes.³⁴ This occurs when the LRP1-ICD translocates to the nucleus and associates with interferon regulatory factor 3 promoting its nuclear export (Figure, B). This pathway is clearly a feedback inhibitory pathway because presenillin-1-mediated cleavage of LRP1 in macrophages is increased by treatment with lipopolysaccharide. The net result of this pathway is attenuation of tumor necrosis factor- α and interleukin-6 secretion in response to lipopolysaccharide.

Mao et al⁷ identifies a second consequence of regulated intramembrane proteolysis in endothelial cells in which LRP1 regulates hypoxia-mediated angiogenesis (Figure, C). The precise mechanism of how this occurs still needs to be established, but the results suggest that LRP1 regulates endothelial cell proliferation by preventing cell cycle progression. During the premitotic stage of the cell cycle, multiple checkpoints ensure the integrity of the genome³⁵ and several crucial proteins play critical roles in these check points. These include

cyclin-dependent kinases (Cdks) including Cdk2, which are Ser/Thr kinases that play a central role in the eukaryotic cell division cycle³⁶ by mediating the phosphorylation of retinoblastoma to facilitate the G1/S transition in cell cycle.³⁷ Mao et al⁷ provided evidence that *LRP1* knockdown in human retinal microvascular endothelial cells significantly increases Cdk2 activity as detected by increased phosphorylation at Thr160. Similarly, *LRP1* knockdown increased retinoblastoma phosphorylation at Ser807/811 leading to retinoblastoma inactivation resulting in release of sequestered E2F transcription factors. The studies also revealed that inhibition of PARP-1 rescues these effects resulting from LRP1 knockdown. The conclusion from this work is that LRP1 expression attenuates the phosphorylation of Cdk2 and retinoblastoma in normoxia conditions by associating with PARP-1. In hypoxic conditions, despite the fact that *LRP1* mRNA expression and protein levels increase,^{19–21} the interaction between LRP1 and PARP-1 is diminished and PARP-1 is freed from the LRP1-ICD leading to its increased activation. This in turn increases Cdk2 and retinoblastoma phosphorylation driving cell proliferation (Figure, C).

Although the potential of LRP1 to regulate PARP-1 is an exciting new discovery, this finding raises several important questions that need to be further examined. First, as the binding site on the LRP1-ICD for PARP-1 has been localized to the last 33 amino acids within the ICD, a deletion mutant of LRP1 would be instrumental in teasing out the molecular mechanisms of LRP1/PARP-1 interactions in endothelial cell biology. Second, the role of LRP1/PARP-1 interactions

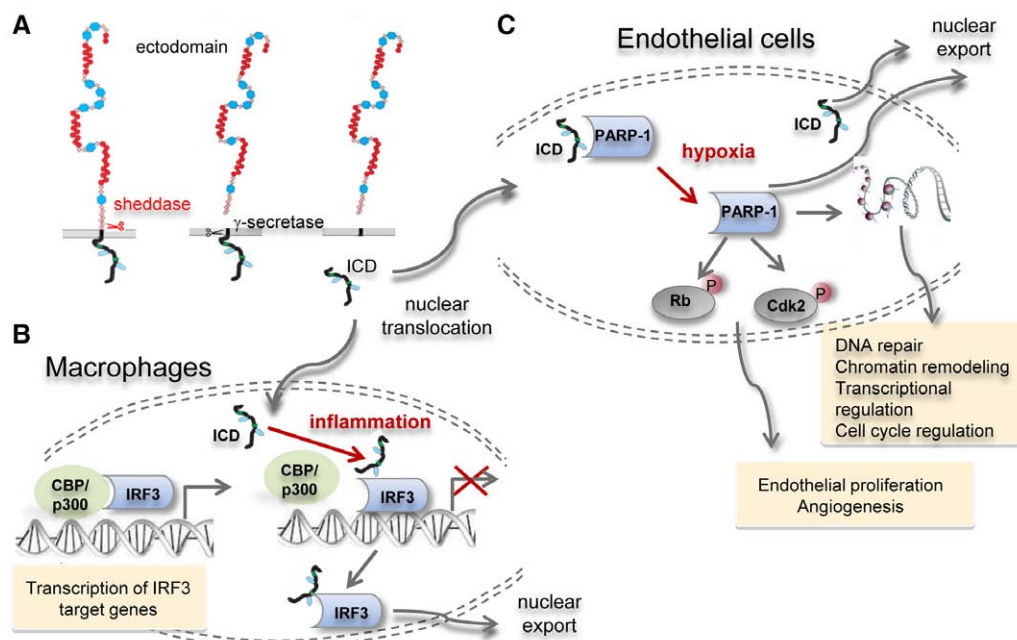


Figure. Regulated intramembrane proteolysis (RIP) of low-density lipoprotein receptor-related protein 1 (LRP1) regulates inflammation and endothelial cell proliferation. **A**, RIP is a sequential process that first involves shedding of the LRP1 ectodomain, likely via an ADAM-like protease. This is followed by presenilin-1-mediated cleavage of shed LRP1 releasing the LRP1-intracellular domain (ICD), which can diffuse to the nucleus. **B**, In macrophages, the LRP1-ICD attenuates lipopolysaccharide-mediated inflammation by associating with interferon regulatory factor 3 (IRF3) resulting in nuclear export of this transcription factor. **C**, In endothelial cells, the LRP1-ICD associates with poly(ADP-ribose) polymerase-1 (PARP-1), attenuating its function. Under conditions of hypoxia, the interaction between LRP1-ICD and PARP-1 is weakened, and PARP-1 is freed to mediate the activation of cyclin-dependent kinase 2 (Cdk2) and inhibition of retinoblastoma (Rb), leading to angiogenesis.

in other pathological and physiological situations needs to be investigated. For example, does this interaction play any role in cancer biology? In addition, through detailed studies of PARP-1 inhibitors additional roles of PARP-1 are emerging, including regulation of inflammatory mediators,³⁸ regulation of transcription factor activity³⁹ and regulation of sex hormone signaling⁴⁰ and cell division.⁴¹ What is the potential role of LRP1 in regulating PARP-1 activation in these scenarios? Furthermore, PARP-1 has been reported to undergo activation during long-term memory,⁴² and it is interesting to consider the possibility that LRP1 may influence this pathway as well. The answers to these questions will prove to be exciting areas for further investigation.

Sources of Funding

This work was supported by grants HL072929 and HL114379 (D.K. Strickland) from the National Institutes of Health. S.C. Muratoglu was supported by a Scientist Development Grant from the American Heart Association.

Disclosures

None.

References

- Kim JD, Lee HW, Jin SW. Diversity is in my veins: role of bone morphogenetic protein signaling during venous morphogenesis in zebrafish illustrates the heterogeneity within endothelial cells. *Arterioscler Thromb Vasc Biol.* 2014;34:1838–1845. doi: 10.1161/ATVBAHA.114.303219.
- Carmeliet P, Jain RK. Molecular mechanisms and clinical applications of angiogenesis. *Nature.* 2011;473:298–307. doi: 10.1038/nature10144.
- Gariano RF, Gardner TW. Retinal angiogenesis in development and disease. *Nature.* 2005;438:960–966. doi: 10.1038/nature04482.
- Stone J, Itin A, Alon T, Pe'er J, Gnessin H, Chan-Ling T, Keshet E. Development of retinal vasculature is mediated by hypoxia-induced vascular endothelial growth factor (VEGF) expression by neuroglia. *J Neurosci.* 1995;15(7 Pt 1):4738–4747.
- Phng LK, Gerhardt H. Angiogenesis: a team effort coordinated by notch. *Dev Cell.* 2009;16:196–208. doi: 10.1016/j.devcel.2009.01.015.
- Corada M, Nyqvist D, Orsenigo F, Caprini A, Giampietro C, Taketo MM, Iruela-Arispe ML, Adams RH, Dejana E. The Wnt/beta-catenin pathway modulates vascular remodeling and specification by upregulating Dll4/Notch signaling. *Dev Cell.* 2010;18:938–949. doi: 10.1016/j.devcel.2010.05.006.
- Mao H, Lockyer P, Townley-Tilson WHD, Xie L, Pi X. LRP1 regulates retinal angiogenesis by inhibiting PARP-1 activity and endothelial cell proliferation. *Arterioscler Thromb Vasc Biol.* 2016;36:350–360. doi: 10.1161/ATVBAHA.115.306713.
- Herz J, Strickland DK. LRP: a multifunctional scavenger and signaling receptor. *J Clin Invest.* 2001;108:779–784. doi: 10.1172/JCI13992.
- Lillis AP, Van Duyn LB, Murphy-Ullrich JE, Strickland DK. LDL receptor-related protein 1: unique tissue-specific functions revealed by selective gene knockout studies. *Physiol Rev.* 2008;88:887–918. doi: 10.1152/physrev.00033.2007.
- May P, Herz J, Bock HH. Molecular mechanisms of lipoprotein receptor signalling. *Cell Mol Life Sci.* 2005;62:2325–2338. doi: 10.1007/s00018-005-5231-z.
- Boucher P, Herz J. Signaling through LRP1: protection from atherosclerosis and beyond. *Biochem Pharmacol.* 2011;81:1–5. doi: 10.1016/j.bcp.2010.09.018.
- Herz J, Couthier DE, Hammer RE. Correction: LDL receptor-related protein internalizes and degrades uPA-PAI-1 complexes and is essential for embryo implantation. *Cell.* 1993;73:428.
- Nakajima C, Haffner P, Goerke SM, Zurhove K, Adelmann G, Frotscher M, Herz J, Bock HH, May P. The lipoprotein receptor LRP1 modulates sphingosine-1-phosphate signaling and is essential for vascular development. *Development.* 2014;141:4513–4525. doi: 10.1242/dev.109124.
- Boucher P, Gotthardt M, Li WP, Anderson RG, Herz J. LRP: role in vascular wall integrity and protection from atherosclerosis. *Science.* 2003;300:329–332. doi: 10.1126/science.1082095.
- Muratoglu SC, Belgrave S, Hampton B, Migliorini M, Coksaygan T, Chen L, Mikhailenko I, Strickland DK. LRP1 protects the vasculature by regulating levels of connective tissue growth factor and HtrA1. *Arterioscler Thromb Vasc Biol.* 2013;33:2137–2146. doi: 10.1161/ATVBAHA.113.301893.
- Liu Y, Wada R, Yamashita T, Mi Y, Deng CX, Hobson JP, Rosenfeldt HM, Nava VE, Chae SS, Lee MJ, Liu CH, Hla T, Spiegel S, Proia RL. Edg-1, the G protein-coupled receptor for sphingosine-1-phosphate, is essential for vascular maturation. *J Clin Invest.* 2000;106:951–961. doi: 10.1172/JCI10905.
- Pi X, Schmitt CE, Xie L, Portbury AL, Wu Y, Lockyer P, Dyer LA, Moser M, Bu G, Flynn EJ III, Jin SW, Patterson C. LRP1-dependent endocytic mechanism governs the signaling output of the bmp system in endothelial cells and in angiogenesis. *Circ Res.* 2012;111:564–574. doi: 10.1161/CIRCRESAHA.112.274597.
- Moestrup SK, Gliemann J, Pallesen G. Distribution of the alpha 2-macroglobulin receptor/low density lipoprotein receptor-related protein in human tissues. *Cell Tissue Res.* 1992;269:375–382.
- Koong AC, Denko NC, Hudson KM, Schindler C, Swiersz L, Koch C, Evans S, Ibrahim H, Le QT, Terris DJ, Giaccia AJ. Candidate genes for the hypoxic tumor phenotype. *Cancer Res.* 2000;60:883–887.
- Montel V, Gaultier A, Lester RD, Campana WM, Gonias SL. The low-density lipoprotein receptor-related protein regulates cancer cell survival and metastasis development. *Cancer Res.* 2007;67:9817–9824. doi: 10.1158/0008-5472.CAN-07-0683.
- Castellano J, Aledo R, Sendra J, Costales P, Juan-Babot O, Badimon L, Llorente-Cortés V. Hypoxia stimulates low-density lipoprotein receptor-related protein-1 expression through hypoxia-inducible factor-1 α in human vascular smooth muscle cells. *Arterioscler Thromb Vasc Biol.* 2011;31:1411–1420. doi: 10.1161/ATVBAHA.111.225490.
- Kang DE, Pietrzik CU, Baum L, Chevallier N, Merriam DE, Kounnas MZ, Wagner SL, Troncoso JC, Kawas CH, Katzman R, Koo EH. Modulation of amyloid beta-protein clearance and Alzheimer's disease susceptibility by the LDL receptor-related protein pathway. *J Clin Invest.* 2000;106:1159–1166. doi: 10.1172/JCI11013.
- Shibata M, Yamada S, Kumar SR, Calero M, Bading J, Frangione B, Holtzman DM, Miller CA, Strickland DK, Ghiso J, Zlokovic BV. Clearance of Alzheimer's amyloid-ss(1–40) peptide from brain by LDL receptor-related protein-1 at the blood-brain barrier. *J Clin Invest.* 2000;106:1489–1499. doi: 10.1172/JCI10498.
- Pan W, Kastin AJ, Zankel TC, van Kerkhof P, Terasaki T, Bu G. Efficient transfer of receptor-associated protein (RAP) across the blood-brain barrier. *J Cell Sci.* 2004;117(Pt 21):5071–5078. doi: 10.1242/jcs.01381.
- Benchenane K, Berezowski V, Fernández-Monreal M, Brillault J, Valable S, Dehouck MP, Cecchelli R, Vivien D, Touzani O, Ali C. Oxygen glucose deprivation switches the transport of tPA across the blood-brain barrier from an LRP-dependent to an increased LRP-independent process. *Stroke.* 2005;36:1065–1070. doi: 10.1161/01.STR.0000163050.39122.4f.
- Nazer B, Hong S, Selkoe DJ. LRP promotes endocytosis and degradation, but not transcytosis, of the amyloid-beta peptide in a blood-brain barrier *in vitro* model. *Neurobiol Dis.* 2008;30:94–102. doi: 10.1016/j.nbd.2007.12.005.
- Ito S, Ueno T, Ohtsuki S, Terasaki T. Lack of brain-to-blood efflux transport activity of low-density lipoprotein receptor-related protein-1 (LRP-1) for amyloid-beta peptide(1–40) in mouse: involvement of an LRP-1-independent pathway. *J Neurochem.* 2010;113:1356–1363. doi: 10.1111/j.1471-4159.2010.06708.x.
- Storck SE, Meister S, Nahrath J et al. Endothelial LRP1 transports amyloid-beta1-42 across the blood-brain barrier [published online ahead of print November 30, 2015]. *J Clin Invest.* doi: 10.1172/JCI81108. <https://www.jci.org/articles/view/81108>.
- Bouchard VJ, Rouleau M, Poirier GG. PARP-1, a determinant of cell survival in response to DNA damage. *Exp Hematol.* 2003;31:446–454.
- Grube K, Bürkle A. Poly(ADP-ribose) polymerase activity in mononuclear leukocytes of 13 mammalian species correlates with species-specific life span. *Proc Natl Acad Sci U S A.* 1992;89:11759–11763.
- D'Amours D, Desnoyers S, D'Silva I, Poirier GG. Poly(ADP-ribose)ylation reactions in the regulation of nuclear functions. *Biochem J.* 1999;342(Pt 2):249–268.

32. Schreiber V, Dantzer F, Ame JC, de Murcia G. Poly(ADP-ribose): novel functions for an old molecule. *Nat Rev Mol Cell Biol*. 2006;7:517–528. doi: 10.1038/nrm1963.
33. May P, Reddy YK, Herz J. Proteolytic processing of low density lipoprotein receptor-related protein mediates regulated release of its intracellular domain. *J Biol Chem*. 2002;277:18736–18743. doi: 10.1074/jbc.M201979200.
34. Zurhove K, Nakajima C, Herz J, Bock HH, May P. Gamma-secretase limits the inflammatory response through the processing of LRP1. *Sci Signal*. 2008;1:ra15. doi: 10.1126/scisignal.1164263.
35. Elledge SJ. Cell cycle checkpoints: preventing an identity crisis. *Science*. 1996;274:1664–1672.
36. Meyerson M, Enders GH, Wu CL, Su LK, Gorka C, Nelson C, Harlow E, Tsai LH. A family of human cdc2-related protein kinases. *EMBO J*. 1992;11:2909–2917.
37. Ewen ME. The cell cycle and the retinoblastoma protein family. *Cancer Metastasis Rev*. 1994;13:45–66.
38. Haddad M, Rhinn H, Bloquel C, Coqueran B, Szabó C, Plotkine M, Scherman D, Margail I. Anti-inflammatory effects of PJ34, a poly(ADP-ribose) polymerase inhibitor, in transient focal cerebral ischemia in mice. *Br J Pharmacol*. 2006;149:23–30. doi: 10.1038/sj.bjp.0706837.
39. Hassa PO, Hottiger MO. The functional role of poly(ADP-ribose)polymerase 1 as novel coactivator of NF-kappaB in inflammatory disorders. *Cell Mol Life Sci*. 2002;59:1534–1553.
40. Wright RH, Castellano G, Bonet J, Le Dily F, Font-Mateu J, Ballaré C, Nacht AS, Soronellas D, Oliva B, Beato M. CDK2-dependent activation of PARP-1 is required for hormonal gene regulation in breast cancer cells. *Genes Dev*. 2012;26:1972–1983. doi: 10.1101/gad.193193.112.
41. Chang P, Jacobson MK, Mitchison TJ. Poly(ADP-ribose) is required for spindle assembly and structure. *Nature*. 2004;432:645–649. doi: 10.1038/nature03061.
42. Goldberg S, Visocek L, Giladi E, Gozes I, Cohen-Armon M. PolyADP-ribosylation is required for long-term memory formation in mammals. *J Neurochem*. 2009;111:72–79. doi: 10.1111/j.1471-4159.2009.06296.x.

KEY WORDS: endothelial cells ■ extracellular matrix ■ pericytes ■ receptors, lipoprotein ■ tumor necrosis factor ■ zebrafish

Arteriosclerosis, Thrombosis, and Vascular Biology



JOURNAL OF THE AMERICAN HEART ASSOCIATION

LRP in Endothelial Cells: A Little Goes a Long Way Dudley K. Strickland and Selen C. Muratoglu

Arterioscler Thromb Vasc Biol. 2016;36:213-216

doi: 10.1161/ATVBAHA.115.306895

Arteriosclerosis, Thrombosis, and Vascular Biology is published by the American Heart Association, 7272
Greenville Avenue, Dallas, TX 75231

Copyright © 2016 American Heart Association, Inc. All rights reserved.

Print ISSN: 1079-5642. Online ISSN: 1524-4636

The online version of this article, along with updated information and services, is located on the
World Wide Web at:

<http://atvb.ahajournals.org/content/36/2/213>

Permissions: Requests for permissions to reproduce figures, tables, or portions of articles originally published in *Arteriosclerosis, Thrombosis, and Vascular Biology* can be obtained via RightsLink, a service of the Copyright Clearance Center, not the Editorial Office. Once the online version of the published article for which permission is being requested is located, click Request Permissions in the middle column of the Web page under Services. Further information about this process is available in the [Permissions and Rights Question and Answer](#) document.

Reprints: Information about reprints can be found online at:
<http://www.lww.com/reprints>

Subscriptions: Information about subscribing to *Arteriosclerosis, Thrombosis, and Vascular Biology* is online at:
<http://atvb.ahajournals.org/subscriptions/>