

Previous Brief Review in this Series:

- Wolfrum S, Jensen KS, Liao JK. Endothelium-dependent effects of statins. 2003;23:729–736.

## Caveolin, Caveolae, and Endothelial Cell Function

Philippe G. Frank, Scott E. Woodman, David S. Park, Michael P. Lisanti

**Abstract**—Caveolae are 50- to 100-nm cell-surface plasma membrane invaginations observed in terminally differentiated cells. They are particularly abundant in endothelial cells, where they are believed to play a major role in the regulation of endothelial vesicular trafficking and signal transduction. The use of caveolin-1-deficient mice has provided many new insights into the roles of caveolae and caveolin-1 in the regulation of endothelial cell function. These novel findings suggest an important role for caveolin-1 in the pathogenesis of cancer, atherosclerosis, and vascular disease. (*Arterioscler Thromb Vasc Biol.* 2003;23:1161-1168.)

**Key Words:** caveolae ■ endothelial cells ■ transcytosis ■ angiogenesis ■ atherosclerosis

Caveolae are 50- to 100-nm cell-surface invaginations that were first described ≈50 years ago.<sup>1,2</sup> These structures were initially believed to play an important role in the regulation of transcytosis in endothelial and epithelial cells. However, after the identification of caveolin-1 as the principal marker of caveolae,<sup>3–5</sup> a more complex role for caveolae has been revealed.

Several cell types express high levels of caveolin-1. They include endothelial cells, type I pneumocytes, and adipocytes.<sup>6</sup> It is therefore not surprising that most of the abnormalities observed in caveolin-1-deficient mice are localized within the lungs, adipose tissue, and vascular compartment.<sup>7,8</sup> The generation of caveolin-1-deficient mice has greatly helped to further define the role of caveolae/caveolin-1 in these organ systems. In this review, we will focus on the functional role of caveolae and caveolin-1 in the endothelium.

### Caveolin-1 and Caveolae in Endothelial Cells

The endothelial cell is one of the cell types that express the highest levels of caveolin-1.<sup>9</sup> As a consequence, these cells contain a large number of caveolae (Figure). The classic type of caveolae ( $\Omega$ -shaped cell-surface invaginations) is probably the most predominant form. However, other structures containing caveolin-1 are found in endothelial cells,<sup>6</sup> including detached plasmalemmal vesicles and tubular-vesicular channels.

Tubular channels might be important, because these structures link the luminal and basal plasma membranes, thereby creating a transendothelial channel. Therefore, caveolae might be involved in vesicular transport as detached vesicles.

Consistent with this observation, it is important to note that caveolae contain all of the “machinery” necessary for vesicle formation, fission, docking, and fusion with target membranes.<sup>10</sup> Recently, Dvorak and Feng<sup>11</sup> have also identified a new type of organelle present in normal venule endothelial cells, in venules associated with allergic reactions, and in capillaries observed in tumors. These structures were also shown to contain caveolin-1, and they might play an important role in the regulation of endothelium permeability.

Caveolin-1 has been shown to be involved in the regulation of numerous signaling cascades. The Table summarizes<sup>9,33,45–47,52,57,63,75–96</sup> some of the most important endothelial signaling molecules associated with caveolae. The role of caveolin-1 in the regulation of these signal transduction cascades will be discussed in subsequent sections.

### Role of Caveolae in the Transcytosis of Macromolecules

Transcytosis is one of the first functional roles proposed for caveolae. In this process, caveolae transport macromolecules

Received February 1, 2003; revision accepted March 25, 2003.

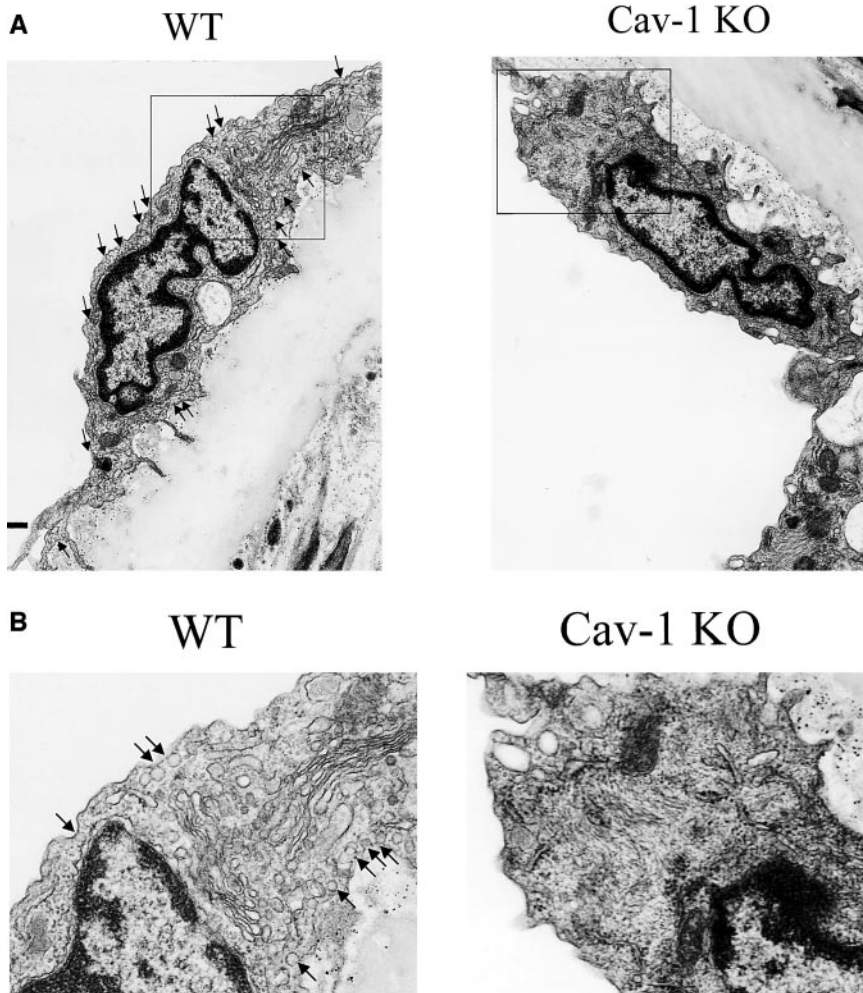
From the Department of Molecular Pharmacology, Albert Einstein College of Medicine, Bronx, NY.

Correspondence to Michael P. Lisanti, Department of Molecular Pharmacology, Albert Einstein College of Medicine, 1300 Morris Park Ave, Golding 202, Bronx, NY 10461. E-mail lisanti@aecom.yu.edu

© 2003 American Heart Association, Inc.

*Arterioscler Thromb Vasc Biol.* is available at <http://www.atvbaha.org>

DOI: 10.1161/01.ATV.0000070546.16946.3A



Caveolae structures in aortic endothelial cells. Electron microscopy of the aorta was performed, as described previously.<sup>97</sup> Electron micrographs of wild-type (WT) and caveolin-1-deficient (Cav-1 KO) aortas are compared. Wild-type endothelial cells exhibit numerous caveolae at the cell surface (arrows) in addition to detached plasmalemmal vesicles. These structures are clearly absent from caveolin-1-deficient endothelial cells. Scale bar=500 nm. B shows a  $\times 1.5$ -magnified view of the boxed section presented in A.

from the luminal side of the blood vessel to the subendothelial space. Transcytosis can be both constitutive (eg, fluid-phase transport) or receptor mediated (the molecule transported requires the presence of its cognate receptor in caveolae). The transport of many macromolecules has been associated with this transcytotic pathway. The caveolar transcytosis of molecules such as albumin,<sup>12</sup> insulin,<sup>13</sup> and native LDL (as well as modified LDL)<sup>14,15</sup> has been clearly demonstrated.

Bendayan and Rasio<sup>13</sup> have shown that the transport of albumin and insulin might occur through different subsets of caveolae. This observation suggests that caveolae-mediated transcytosis is a highly regulated and specialized process. However, some of the initial observations were performed with inhibitors of caveolae formation, such as filipin or *N*-ethylmaleimide.<sup>16</sup> For example, Schnitzer et al<sup>17</sup> have demonstrated that disassembling caveolae, by using a sterol-binding agent such as filipin, could reduce the transcytosis of albumin and insulin without affecting clathrin-dependent pathways.

Following up on these findings, McIntosh et al<sup>18</sup> used a specific antibody targeted against lung endothelial caveolae. They showed that after injection of a gold-labeled version of this antibody, gold particles were observed at the surface of lung endothelial cells (associated with cell-surface caveolae)

within 2 to 3 minutes. After 5 minutes, gold particles were observed within internalized caveolae (plasmalemmal vesicles) inside the cells and finally, within the subendothelial space after  $\approx 10$  to 15 minutes.

More recent studies from our laboratory<sup>19</sup> have shown that caveolae are important for the transcytosis of albumin across endothelial cells. In this study,<sup>19</sup> gold-labeled albumin was perfused into wild-type or caveolin-1-deficient mouse lung, which contains large numbers of endothelial cells. Whereas control endothelial cells could associate with gold-labeled bovine serum albumin, internalize, and transfer it to the subendothelial space through caveolae, no uptake or transfer was observed in caveolin-1-deficient animals. This is the first direct evidence supporting a role for caveolin-1 and caveolae in transcytosis. The function of caveolae in this process is to allow the specific transfer of molecules to the subendothelial space. Regulation of this pathway occurs at 3 levels: (1) The cell-surface availability of caveolae might be modified at any time by specific signals that alter caveolar lipid composition or caveolin-1 posttranslational modifications (eg, tyrosine phosphorylation and/or palmitoylation). (2) Caveolin-1 and/or caveolin-2 protein expression levels can be upregulated or downregulated. (3) Caveolae receptor localization or expression could be altered. The transcytotic role of caveolae is not limited to endothelial cells but might

also extend to epithelial cells.<sup>20</sup> During the transcytosis process, caveolin-1 tyrosine phosphorylation appears to play an important role for the release of caveolae from the plasma membrane.<sup>21–24</sup>

### Role of Endothelial Caveolae in Vascular Permeability

When discussing the role of caveolae/caveolin in transcytosis, we must also consider their role in endothelial permeability. The existence of a transcytotic pathway suggests that vascular permeability may also be regulated by caveolae/caveolins. Indeed, studies with lipoproteins have indicated that HDL particles are transferred more efficiently than are LDL particles, whereas VLDL species are not transported.<sup>25</sup> The permeability of the endothelium is especially important in the case of infectious diseases, atherosclerosis, and blood-brain barrier functioning. The selective permeability of endothelial cells to a specific molecule is controlled not only by the size of caveolar vesicles but also by the presence of specific receptors within caveolae. Under certain conditions, vascular endothelial growth factor (VEGF) can induce the clustering of caveolae, therefore allowing the formation of what has been termed vesiculovacuolar organelles (VVOs<sup>26</sup>). Also, long-term treatment of endothelial cells with VEGF resulted in the formation of fenestrae.<sup>27</sup> These findings suggest a crucial role for caveolin-1 in fenestrae formation. However, more recent studies have shown that glomerular endothelial fenestrae are still formed in caveolin-1-deficient mice.<sup>28</sup> In addition, the ability of caveolin-1 to inhibit endothelial nitric oxide synthase (eNOS) might also contribute to the regulation of vascular permeability. In agreement with this hypothesis, eNOS deficiency in genetically engineered mice is associated with reduced VEGF-induced permeability.<sup>29</sup>

Studies from our laboratory have shown that although endothelium from caveolin-1-deficient mice cannot transfer gold-labeled albumin through caveolae to peripheral tissues,<sup>19</sup> an alternative route exists.<sup>7,30</sup> This route, presumably paracellular transport, becomes more important owing to the constitutive activation of eNOS in *Cav-1*-null (–/–) mice.<sup>30</sup> In addition, in caveolin-1-deficient mice, electron microscopic analysis revealed (1) clear defects in endothelial tight junction formation and (2) abnormalities in capillary endothelial cell adhesion to the basement membrane.<sup>30</sup> These results suggest that caveolin-1 plays an important role in the organization of protein interactions between cells and the extracellular matrix. In fact, caveolin-1 can also interact with integrin proteins.<sup>31</sup> The involvement of eNOS in this process was demonstrated with the use of *N*-nitro-*L*-arginine methyl ester (*L*-NAME), a well-established eNOS inhibitor. Schubert et al<sup>30</sup> showed that in caveolin-1-deficient mice injected with *L*-NAME, plasma albumin clearance was restored to almost normal levels.

### Caveolae/Caveolin and eNOS

Endothelium-derived NO has a profound effect on vessel tonicity and permeability. The endothelial enzyme responsible for the generation of NO is known as eNOS. Within an endothelial cell, eNOS targets to lipid rafts/caveolae of the plasma membrane and the Golgi apparatus<sup>32,33</sup> where it is

tonically inhibited by binding to caveolin-1.<sup>34–36</sup> Optimal eNOS activity occurs when the eNOS/caveolin-1 interaction is competitively disrupted by calcium/calmodulin binding to eNOS.

The role of caveolin-1 as a modulator of eNOS activity and thus, vascular tone has been demonstrated in mouse models. For example, a cell-permeable peptide containing the region of caveolin-1 that binds to eNOS (ie, the caveolin-1 scaffolding domain, residues 82 to 101) was shown to inhibit acetylcholine-induced NO production and vasodilation in *ex vivo* mouse aorta experiments.<sup>37</sup> Conversely, aortas derived from *Cav-1*-null (–/–) mice showed marked enhancement of the relaxation response to acetylcholine, which is reversed by treatment with *L*-NAME, a specific NOS inhibitor.<sup>7,8</sup>

Vascular permeability is also significantly regulated by caveolin-1's effect on eNOS activity. The edematous response in mice was ameliorated by the injection of a caveolin-1 scaffolding domain-containing peptide.<sup>37</sup> The inverse applies as well, as loss of caveolin-1 markedly increases the vascular permeability to serum albumin by the paracellular route.<sup>30</sup> Importantly, this hyperpermeability is reversed by *L*-NAME injection, thus demonstrating the necessity of caveolin-1 for proper tonic inhibition of eNOS activity. Because both caveolin-1 and eNOS can mediate other endothelial functions, their respective roles will be described in the following sections.

### Caveolin-1 and Angiogenesis

Angiogenesis is the process by which new vasculature is derived from preexisting blood vessels. Recent studies have proposed a role for caveolin-1 in the regulation of angiogenesis.<sup>38–40</sup> Caveolae appear to coalesce, forming larger, vesicular structures as part of the angiogenic response.<sup>41</sup> This observation is supported by the fact that overexpression of caveolin-1 and, thus, enhanced caveolae generation, accelerates capillary tube formation by nearly 3-fold.<sup>40</sup> Conversely, transfection of caveolin-1-based antisense oligonucleotides into endothelial cells results in marked reduction of capillary tube formation in a 3-dimensional fibrin gel assay, as well as in the chorioallantoic membrane system.<sup>38</sup> Similarly, downregulation of caveolin-1 by an antisense adenoviral approach reduces the number of capillary-like tubules formed in an *in vitro* Matrigel assay by >10-fold.<sup>40</sup> Thus, caveolin-1 expression appears to be correlated with progressive stages of the angiogenic process: caveolin-1 expression is downregulated during endothelial proliferation but is then markedly upregulated during endothelial differentiation and vessel formation.<sup>40</sup>

It is interesting to note that several important proteins involved in angiogenesis have been localized to caveolae (Table). Some of these macromolecules include the VEGF receptor (VEGFR), the urokinase receptor (uPAR), and eNOS. Recent studies by Labrecque et al<sup>42</sup> have shown that caveolin-1 tonically inhibits VEGFR-2 signaling, but interaction of VEGFR-2 with caveolin-1 appears to be required for the proper ligand-induced activation of the receptor within caveolae membranes. Brouet et al<sup>39</sup> found that eNOS-dependent atorvastatin stabilization of microvascular endothelial cell tube formation was associated with decreased

**Proteins Associated With Caveolae in Endothelial Cells**

Protein	Function	References
<b>Membrane proteins</b>		
PDGF-R	PDGF receptor	75
CD36	Lipoprotein receptor	57, 76
RAGE	Advanced glycated end products receptor	9
gp60	Albumin receptor	77
SR-BI	Lipoprotein receptor	76, 78
Flk-1/KDR	VEGF receptor	79
Tissue factor pathway inhibitor	Downregulates the procoagulant activity of tissue factor	80
PV-1	Component of stomatal diaphragms of caveolae and transendothelial channels	81
P-glycoprotein	ABC transporter	82
MMP-1	Matrix metalloproteinase	83
MMP-2	Matrix metalloproteinase	84
EDG-1 receptor	Endothelial differentiation gene-1 product	85
uPAR	Urokinase receptor	46
<b>G protein-coupled receptors</b>		
B2R	Bradykinin receptor	43
ET <sub>A</sub>	Endothelin receptor	86
<b>G proteins</b>		
G $\alpha_s$	Regulates G protein-coupled receptor activity	57
G $\alpha_{i1}$	Regulates G protein-coupled receptor activity	57
G $\alpha_{i2}$	Regulates G protein-coupled receptor activity	57
G $\beta\gamma$	Regulates G protein-coupled receptor activity	57
Gq	Regulates G protein-coupled receptor activity	57, 87
<b>Nonreceptor tyrosine kinases</b>		
Src	Regulation of growth factor response	57, 75
Fyn	Regulation of growth factor response	57, 75
Yes	Regulation of growth factor response	57, 75
Lck	Regulation of growth factor response	57, 75
Lyn	Regulation of growth factor response	57, 75
Tyk2	Regulation of growth factor response	43
STAT3	Signal transducers and activators of transcription	43
<b>Nonreceptor Ser/Thr kinases</b>		
Raf	Signal transduction of mitogenic signals	52
MEK	Signal transduction of mitogenic signals	57
PI-3 kinase	Phosphorylation of phosphatidyl-inositol	57, 75
PKC $\alpha$ , $\beta$	Ser/Thr kinase	57, 75
<b>Other enzymes</b>		
eNOS	Production of NO	33, 88
PLC $\gamma$	Phospho-lipase	75
Prostacyclin synthase	Production of prostacyclin (PGI <sub>2</sub> )	45
<b>GTPases</b>		
Ras	GTPase	57
Rap1	GTPase	57
Rap2	GTPase	57
<b>Cellular proteins/adaptors</b>		
Shc	Regulates growth factor response	57
Grb2	Adaptor protein, associates growth factor receptors	57
<b>Other proteins</b>		
ER $\alpha$ and $\beta$	Estrogen receptors	63
NCX	Na <sup>+</sup> /Ca <sup>2+</sup> exchanger	89



TABLE Continued

Protein	Function	References
Ca <sup>2+</sup> -ATPase	Calcium pump	90, 91
IP3 receptor-like protein	Involved in calcium influx	91, 92
Sprouty-1 and -2	Inhibitor of development-associated RTK signaling	47
Cationic arginine transporter-1	Arginine transporter	93
Structural proteins		
Actin	Involved in cell motility	57
Annexin II and VI	Promotes membrane fusion and is involved in exocytosis	57, 10
Dynamin	Involved in vesicular trafficking	94, 95
NSF	Involved in vesicle fusion	10
SNAP	Involved in vesicular transport	10
SNARE	Involved in vesicular transport	10
VAMP-2	Involved in the targeting/fusion of transported vesicles to their target membrane	10

caveolin-1 expression, as well as other modifications that enhance eNOS activity. On stimulation of cells with bradykinin, the G protein-coupled bradykinin B2 receptor (B2R) and downstream effectors (Tyk2 and STAT3) are translocated outside the caveolae.<sup>43</sup> This finding also has repercussions for eNOS regulation, because B2R can also interact with eNOS and inhibit its activity in a ligand- and calcium-dependent manner.<sup>44</sup>

Prostacyclin synthase has also been associated with caveolae.<sup>45</sup> The regulation of this enzyme might have an important role in angiogenesis. However, further studies on the subject are required. Wei et al<sup>46</sup> have shown that uPAR associates with and stabilizes caveolin/integrin complexes. This interaction may promote more efficient signal transduction and could affect the migration of endothelial cells. In addition, two known negative regulators of angiogenesis, Sprouty-1 and -2, have been localized within caveolae.<sup>47</sup> Taken together, these findings suggest a complex role for caveolin-1 in the regulation of angiogenesis.

Finally, in support of a role for caveolin-1 in the regulation of angiogenesis *in vivo*, we have recently shown, using Matrigel plugs supplemented with basic fibroblast growth factor, that angiogenesis in *Cav-1*-null ( $-/-$ ) mice is markedly reduced.<sup>48</sup> Similar observations were made regarding tumor angiogenesis that was induced by injecting the B16 melanoma cell line into *Cav-1*-deficient ( $-/-$ ) and wild-type animals. In addition, ultrastructural analysis of newly formed capillaries within the exogenous tumors revealed disorganized and incomplete capillary formation in *Cav-1*-null mice.

### Caveolin-1 and Shear Stress

Endothelial cells are normally exposed to mechanical forces that affect their function.<sup>49</sup> Shear stress is important in the pathogenesis of coronary artery disease and atherosclerosis, as atheromatous lesions tend to develop at areas of high shear stress.<sup>50</sup> It is believed that laminar and disturbed flows regulate endothelial function differently. Studies by Rizzo et al<sup>51</sup> have shown that upon exposure of endothelial cells to

shear stress, NO is rapidly released and this release is due to the dissociation of eNOS from caveolin-1.

In addition, Rizzo et al<sup>52</sup> have shown that exposure of endothelial cells to shear stress is associated with tyrosine phosphorylation of proteins localized to caveolae. Moreover, the translocation of several signaling molecules into caveolae has been observed and results in activation of the Ras-p42/44 mitogen-activated protein (MAP) kinase cascade. In fact, recent studies have shown that upon exposure of endothelial cells to laminar flow, caveolin-1 undergoes translocation to the upstream side of the cell.<sup>53</sup> Thus, the 3-dimensional reorganization of caveolae in endothelial cells might contribute to the adaptive response observed in cells exposed to shear stress.

### Caveolae, Caveolin-1, and Atherosclerosis

Several lines of evidence now suggest that caveolin-1 might play a proatherogenic role. In endothelial cells, caveolin-1 is upregulated on LDL exposure.<sup>54</sup> Moreover, downregulation of caveolin-1 is associated with reduced uptake of oxidized LDL by endothelial cells.<sup>55</sup> This finding is especially important, because caveolae are proposed to play a major role in the transcytosis of native and modified LDL.

Caveolin-1 translocation to the plasma membrane is also enhanced on incubation of endothelial cells with LDL. This movement is accompanied by increased association of Ras with caveolae and results in the activation of Ras, an important upstream activator of the p42/44 MAP kinase pathway.<sup>54</sup> Blair et al<sup>56</sup> have also shown that oxidized LDL can modify the distribution of both caveolin-1 and eNOS. This redistribution is accompanied by a reduction in eNOS activation by acetylcholine. This observation might be the result of disruption of the signal transduction complex containing eNOS, caveolin-1, and other molecules required for eNOS activation. Recent work by Kincer et al<sup>58</sup> has shown that CD36, a class B scavenger receptor associated with caveolae, was probably responsible for this effect.<sup>58</sup> This observation is important in view of the fact that in hypercholesterolemic patients or animal models, impairment of endothelium-derived relaxation is observed.<sup>59-61</sup> In agreement

with this finding, Feron et al<sup>62</sup> have shown that exposure of endothelial cells to serum from hypercholesterolemic patients promotes an increase in the caveolin-1–eNOS interaction.

The estrogen receptor is also localized within caveolae, and its interaction with estrogen appears to play an important role in the modulation of the eNOS–caveolin-1 association.<sup>63</sup> This observation might in part explain the antiatherogenic effects of short-term 17- $\beta$ -estradiol injection observed in healthy postmenopausal women.<sup>64</sup> In agreement with this finding, long-term estrogen depletion after ovariectomy is accompanied by an upregulation of (cerebral) endothelial caveolin-1 expression in vivo.<sup>65,66</sup>

### Ion Channel Regulation

Several ion channels have been shown to be associated with caveolae (Table). These channels play a very important role in the regulation of endothelial barrier functioning, because they are involved in the regulation of endothelial cell permeability, transcytosis, angiogenesis, and the response to shear stress.<sup>67</sup> Preliminary studies have suggested an important role for intact caveolae in the regulation of proper signaling after the activation of channels, such as the volume-regulated anion channel.<sup>68</sup>

It is also important to note that several calcium channels are localized to caveolae and, as a consequence, they might play a very important role in the regulation of eNOS activation.<sup>69</sup> In fact, recent work by Anderson and collaborators (Isshiki et al<sup>70,71</sup>) has shown that Ca<sup>2+</sup> waves originate in caveolin-rich regions of endothelial cells and can move with caveolae to the trailing edge of migrating endothelial cells.

### Conclusions

Much of the literature reviewed in this article suggests that caveolin-1 and caveolae are required for the proper organization of signaling pathways within endothelial cells. As previously proposed,<sup>72</sup> it suggests that preformed signaling complexes exist within caveolae, allowing for a rapid, efficient, and regulated response to extracellular stimuli. In addition to its regulatory role, caveolin-1 also functions in the proper targeting of certain proteins, such as caveolin-2, glycosylphosphatidyl inositol–linked proteins, and c-Src.<sup>73</sup> Mistargeting of proteins secondary to caveolin-1 deficiency might result in the elimination or alteration of their functional roles. It is therefore important to examine the subcellular localization of certain affected proteins in caveolin-1–deficient mice.

In addition, it is interesting to note that caveolin-1 can be tyrosine phosphorylated under certain conditions, such as oxidative stress.<sup>23,74</sup> However, the role of this posttranslational modification in endothelial cell function remains to be established.

### Acknowledgments

This work was supported by grants from the National Institutes of Health, the Muscular Dystrophy Association, the Breast Cancer Alliance, and the American Heart Association (AHA; all to M.P.L.). P.G.F. was supported by a Scientist Development Grant from the AHA.

### References

- Palade GE. Fine structure of blood capillaries. *J Appl Phys*. 1953; 24:1424.
- Yamada E. The fine structure of the gall bladder epithelium of the mouse. *J Biophys Biochem Cytol*. 1955;1:445–457.
- Rothberg KG, Heuser JE, Donzell WC, Ying YS, Glenney JR, Anderson RG. Caveolin, a protein component of caveolae membrane coats. *Cell*. 1992;68:673–682.
- Kurzchalia T, Dupree P, Parton RG, Kellner R, Virta H, Lehnert M, Simons K. VIP 21, a 21-kD membrane protein is an integral component of trans-Golgi-network-derived transport vesicles. *J Cell Biol*. 1992;118: 1003–1014.
- Glenney JR, Soppet D. Sequence and expression of caveolin, a protein component of caveolae plasma membrane domains phosphorylated on tyrosine in Rous sarcoma virus-transformed fibroblasts. *Proc Natl Acad Sci U S A*. 1992;89:10517–10521.
- Razani B, Woodman SE, Lisanti MP. Caveolae: from cell biology to animal physiology. *Pharmacol Rev*. 2002;54:431–467.
- Drab M, Verkade P, Elger M, Kasper M, Lohn M, Lauterbach B, Menne J, Lindschau C, Mende F, Luft FC, Schedl A, Haller H, Kurzchalia TV. Loss of caveolae, vascular dysfunction, and pulmonary defects in caveolin-1 gene-disrupted mice. *Science*. 2001;293:2449–2452.
- Razani B, Engelman JA, Wang XB, Schubert W, Zhang XL, Marks CB, Macaluso F, Russell RG, Li M, Pestell RG, Di Vizio D, Hou H Jr, Kneitz B, Lagaud G, Christ GJ, Edelmann W, Lisanti MP. Caveolin-1 null mice are viable but show evidence of hyperproliferative and vascular abnormalities. *J Biol Chem*. 2001;276:38121–38138.
- Lisanti MP, Scherer PE, Vidugiriene J, Tang Z-L, Hermanoski-Vosatka A, Tu Y-H, Cook RF, Sargiacomo M. Characterization of caveolin-rich membrane domains isolated from an endothelial-rich source: implications for human disease. *J Cell Biol*. 1994;126:111–126.
- Schnitzer JE, Liu J, Oh P. Endothelial caveolae have the molecular transport machinery for vesicle budding, docking, and fusion including VAMP, NSF, SNAP, annexins, and GTPases. *J Biol Chem*. 1995;270: 14399–14404.
- Dvorak AM, Feng D. The vesiculo-vacuolar organelle (VVO): a new endothelial cell permeability organelle. *J Histochem Cytochem*. 2001;49: 419–432.
- Ghitescu L, Fixman A, Simionescu M, Simionescu N. Specific binding sites for albumin restricted to plasmalemmal vesicles of continuous capillary endothelium: receptor-mediated transcytosis. *J Cell Biol*. 1986;102: 1304–1311.
- Bendayan M, Rasio EA. Transport of insulin and albumin by the microvascular endothelium of the rete mirabile. *J Cell Sci*. 1996;109 (pt 7):1857–1864.
- Vasile E, Simionescu M, Simionescu N. Visualization of the binding, endocytosis, and transcytosis of low density lipoprotein in the arterial endothelium in situ. *J Cell Biol*. 1983;96:1677–1689.
- Kim M-J, Dawes J, Jessup W. Transendothelial transport of modified low-density lipoproteins. *Atherosclerosis*. 1994;108:5–17.
- Rippe B, Rosengren BI, Carlsson O, Venturoli D. Transendothelial transport: the vesicle controversy. *J Vasc Res*. 2002;39:375–390.
- Schnitzer JE, Oh P, Pinney E, Allard J. Filipin-sensitive caveolae-mediated transport in endothelium: reduced transcytosis, scavenger endocytosis, and capillary permeability of select macromolecules. *J Cell Biol*. 1994;127:1217–1232.
- McIntosh DP, Tan XY, Oh P, Schnitzer JE. Targeting endothelium and its dynamic caveolae for tissue-specific transcytosis in vivo: a pathway to overcome cell barriers to drug and gene delivery. *Proc Natl Acad Sci U S A*. 2002;99:1996–2001.
- Schubert W, Frank PG, Razani B, Park DS, Chow CW, Lisanti MP. Caveolae-deficient endothelial cells show defects in the uptake and transport of albumin in vivo. *J Biol Chem*. 2001;276:48619–48622.
- John TA, Vogel SM, Minshall RD, Ridge K, Tirupathi C, Malik AB. Evidence for the role of alveolar epithelial gp60 in active transalveolar albumin transport in the rat lung. *J Physiol*. 2001;533:547–559.
- Parton RG, Joggerst B, Simons K. Regulated internalization of caveolae. *J Cell Biol*. 1994;127:1199–1215.
- Tirupathi C, Song W, Bergenfeldt M, Sass P, Malik AB. Gp60 activation mediates albumin transcytosis in endothelial cells by tyrosine kinase-dependent pathway. *J Biol Chem*. 1997;272:25968–25975.
- Aoki T, Nomura R, Fujimoto T. Tyrosine phosphorylation of caveolin-1 in the endothelium. *Exp Cell Res*. 1999;253:629–636.

24. Minshall RD, Tirupathi C, Vogel SM, Malik AB. Vesicle formation and trafficking in endothelial cells and regulation of endothelial barrier function. *Histochem Cell Biol.* 2002;117:105–112.
25. Robinson CS, Wagner RC. Differential endocytosis of lipoproteins by capillary endothelial vesicles. *Microcirc Endothelium Lymphatics.* 1985; 2:313–329.
26. Vasile E, Qu H, Dvorak HF, Dvorak AM. Caveolae and vesiculo-vacuolar organelles in bovine capillary endothelial cells cultured with VPF/VEGF on floating Matrigel-collagen gels. *J Histochem Cytochem.* 1999;47:159–167.
27. Chen J, Braet F, Brodsky S, Weinstein T, Romanov V, Noiri E, Goligorsky MS. VEGF-induced mobilization of caveolae and increase in permeability of endothelial cells. *Am J Physiol Cell Physiol.* 2002;282:C1053–C1063.
28. Sorensson J, Fierlbeck W, Heider T, Schwarz K, Park DS, Mundel P, Lisanti M, Ballermann BJ. Glomerular endothelial fenestrae in vivo are not formed from caveolae. *J Am Soc Nephrol.* 2002;13:2639–2647.
29. Fukumura D, Gohongi T, Kadambi A, Izumi Y, Ang J, Yun CO, Buerk DG, Huang PL, Jain RK. Predominant role of endothelial nitric oxide synthase in vascular endothelial growth factor-induced angiogenesis and vascular permeability. *Proc Natl Acad Sci U S A.* 2001;98:2604–2609.
30. Schubert W, Frank PG, Woodman SE, Hyogo H, Cohen DE, Chow CW, Lisanti MP. Microvascular hyperpermeability in caveolin-1 (–/–) knock-out mice: treatment with a specific nitric-oxide synthase inhibitor, L-NAME, restores normal microvascular permeability in Cav-1 null mice. *J Biol Chem.* 2002;277:40091–40098.
31. Wary KK, Mariotti IA, Zurzolo C, Giancotti FG. A requirement for caveolin-1 and associated kinase Fyn in integrin signaling and anchorage-dependent cell growth. *Cell.* 1998;94:625–634.
32. Garcia-Cardena G, Oh P, Liu JW, Schnitzer JE, Sessa WC. Targeting of nitric oxide synthase to endothelial cell caveolae via palmitoylation: implications for nitric oxide signaling. *Proc Natl Acad Sci U S A.* 1996; 93:6448–6453.
33. Shaul PW, Smart EJ, Robinson LJ, German Z, Yuhanna IS, Ying YS, Anderson RGW, Michel T. Acylation targets endothelial nitric-oxide synthase to plasmalemmal caveolae. *J Biol Chem.* 1996;271:6518–6522.
34. Garcia-Cardena G, Fan R, Stern D, Liu J, Sessa WC. Endothelial nitric oxide synthase is regulated by tyrosine phosphorylation and interacts with caveolin-1. *J Biol Chem.* 1996;271:27237–27240.
35. Liu JW, Garcia-Cardena G, Sessa WC. Palmitoylation of endothelial nitric oxide synthase is necessary for optimal stimulated release of nitric oxide: implications for caveolae localization. *Biochemistry.* 1996;35: 13277–13281.
36. Michel JB, Feron O, Sacks D, Michel T. Reciprocal regulation of endothelial nitric-oxide synthase by Ca<sup>2+</sup>-calmodulin and caveolin. *J Biol Chem.* 1997;272:15583–15586.
37. Bucci M, Gratton JP, Rudic RD, Acevedo L, Roviezzo F, Cirino G, Sessa WC. In vivo delivery of the caveolin-1 scaffolding domain inhibits nitric oxide synthesis and reduces inflammation. *Nat Med.* 2000;6:1362–1367.
38. Griffoni C, Spisni E, Santi S, Riccio M, Guarnieri T, Tomasi V. Knockdown of caveolin-1 by antisense oligonucleotides impairs angiogenesis in vitro and in vivo. *Biochem Biophys Res Commun.* 2000;276: 756–761.
39. Brouet A, Sonveaux P, Dessy C, Moniotte S, Balligand JL, Feron O. Hsp90 and caveolin are key targets for the proangiogenic nitric oxide-mediated effects of statins. *Circ Res.* 2001;89:866–873.
40. Liu J, Wang XB, Park DS, Lisanti MP. Caveolin-1 expression enhances endothelial capillary tubule formation. *J Biol Chem.* 2002;277: 10661–10668.
41. Esser S, Wolburg K, Wolburg H, Breier G, Kurzchalia T, Risau W. Vascular endothelial growth factor induces endothelial fenestrations in vitro. *J Cell Biol.* 1998;140:947–959.
42. Labrecque L, Royal I, Surprenant DS, Patterson C, Gingras D, Beliveau R. Regulation of vascular endothelial growth factor receptor-2 activity by caveolin-1 and plasma membrane cholesterol. *Mol Biol Cell.* 2003;14: 334–347.
43. Ju H, Venema VJ, Liang H, Harris MB, Zou R, Venema RC. Bradykinin activates the Janus-activated kinase/signal transducers and activators of transcription (JAK/STAT) pathway in vascular endothelial cells: localization of JAK/STAT signalling proteins in plasmalemmal caveolae. *Biochem J.* 2000;351:257–264.
44. Ju H, Venema VJ, Marrero MB, Venema RC. Inhibitory interactions of the bradykinin B2 receptor with endothelial nitric-oxide synthase. *J Biol Chem.* 1998;273:24025–24029.
45. Spisni E, Griffoni C, Santi S, Riccio M, Marulli R, Bartolini G, Toni M, Ullrich V, Tomasi V. Colocalization of prostacyclin (PGI<sub>2</sub>) synthase–caveolin-1 in endothelial cells and new roles for PGI<sub>2</sub> in angiogenesis. *Exp Cell Res.* 2001;266:31–43.
46. Wei Y, Yang X, Liu Q, Wilkins JA, Chapman HA. A role for caveolin and the urokinase receptor in integrin-mediated adhesion and signaling. *J Cell Biol.* 1999;144:1285–1294.
47. Impagnatiello MA, Weitzer S, Gannon G, Compagni A, Cotten M, Christofori G. Mammalian sprouty-1 and -2 are membrane-anchored phosphoprotein inhibitors of growth factor signaling in endothelial cells. *J Cell Biol.* 2001;152:1087–1098.
48. Woodman SE, Ashton AW, Schubert W, Lee H, Williams T, Medina FA, Wyckoff JB, Combs TP, Lisanti MP. Caveolin-1 knock-out mice show an impaired angiogenic response to exogenous stimuli. *Am J Pathol.* 2003; 162:2059–2068.
49. Traub O, Berk BC. Laminar shear stress: mechanisms by which endothelial cells transduce an atheroprotective force. *Arterioscler Thromb Vasc Biol.* 1998;18:677–685.
50. Gimbrone MA Jr, Topper JN, Nagel T, Anderson KR, Garcia-Cardena G. Endothelial dysfunction, hemodynamic forces, and atherogenesis. *Ann N Y Acad Sci.* 2000;902:230–239.
51. Rizzo V, McIntosh DP, Oh P, Schnitzer JE. In situ flow activates endothelial nitric oxide synthase in luminal caveolae of endothelium with rapid caveolin dissociation and calmodulin association. *J Biol Chem.* 1998;273:34724–34729.
52. Rizzo V, Sung A, Oh P, Schnitzer JE. Rapid mechanotransduction in situ at the luminal cell surface of vascular endothelium and its caveolae. *J Biol Chem.* 1998;273:26323–26329.
53. Sun RJ, Muller S, Stoltz JF, Wang X. Shear stress induces caveolin-1 translocation in cultured endothelial cells. *Eur Biophys J.* 2002;30: 605–611.
54. Zhu Y, Liao HL, Wang N, Yuan Y, Ma KS, Verna L, Stemerman MB. Lipoprotein promotes caveolin-1 and Ras translocation to caveolae: role of cholesterol in endothelial signaling. *Arterioscler Thromb Vasc Biol.* 2000;20:2465–2470.
55. Frank PG, Galbiati F, Volonte D, Razani B, Cohen DE, Marcel YL, Lisanti MP. Influence of caveolin-1 on cellular cholesterol efflux mediated by high-density lipoproteins. *Am J Physiol.* 2001;280: 1204–1214.
56. Blair A, Shaul PW, Yuhanna IS, Conrad PA, Smart EJ. Oxidized low density lipoprotein displaces endothelial nitric-oxide synthase (eNOS) from plasmalemmal caveolae and impairs eNOS activation. *J Biol Chem.* 1999;274:32512–32519.
57. Lisanti MP, Scherer PE, Vidugiriene J, Tang Z, Hermanowski-Vosatka A, Tu YH, Cook RF, Sargiacomo M. Characterization of caveolin-rich membrane domains isolated from an endothelial-rich source: implications for human disease. *J Cell Biol.* 1994;126:111–126.
58. Kincer JF, Uittenbogaard A, Dressman J, Guerin TM, Febbraio M, Guo L, Smart EJ. Hypercholesterolemia promotes a CD36-dependent and endothelial nitric-oxide synthase-mediated vascular dysfunction. *J Biol Chem.* 2002;277:23525–23533.
59. Seiler C, Hess OM, Buechi M, Suter TM, Krayenbuehl HP. Influence of serum cholesterol and other coronary risk factors on vasomotion of angiographically normal coronary arteries. *Circulation.* 1993;88: 2139–2148.
60. Reddy KG, Nair RN, Sheehan HM, Hodgson JM. Evidence that selective endothelial dysfunction may occur in the absence of angiographic or ultrasound atherosclerosis in patients with risk factors for atherosclerosis. *J Am Coll Cardiol.* 1994;23:833–843.
61. Bonthu S, Heistad DD, Chappell DA, Lamping KG, Faraci FM. Atherosclerosis, vascular remodeling, and impairment of endothelium-dependent relaxation in genetically altered hyperlipidemic mice. *Arterioscler Thromb Vasc Biol.* 1997;17:2333–2340.
62. Feron O, Dessy C, Moniotte S, Desager JP, Balligand JL. Hypercholesterolemia decreases nitric oxide production by promoting the interaction of caveolin and endothelial nitric oxide synthase. *J Clin Invest.* 1999; 103:897–905.
63. Chambliss KL, Yuhanna IS, Mineo C, Liu P, German Z, Sherman TS, Mendelsohn ME, Anderson RG, Shaul PW. Estrogen receptor- $\alpha$  and endothelial nitric oxide synthase are organized into a functional signaling module in caveolae. *Circ Res.* 2000;87:E44–E52.
64. Kim HP, Lee JY, Jeong JK, Bae SW, Lee HK, Jo I. Nongenomic stimulation of nitric oxide release by estrogen is mediated by estrogen receptor- $\alpha$  localized in caveolae. *Biochem Biophys Res Commun.* 1999; 263:257–262.
65. Pelligrino DA, Ye S, Tan F, Santizo RA, Feinstein DL, Wang Q. Nitric-oxide-dependent pial arteriolar dilation in the female rat: effects of



- chronic estrogen depletion and repletion. *Biochem Biophys Res Commun.* 2000;269:165–171.
66. Xu HL, Galea E, Santizo RA, Baughman VL, Pelligrino DA. The key role of caveolin-1 in estrogen-mediated regulation of endothelial nitric oxide synthase function in cerebral arterioles in vivo. *J Cereb Blood Flow Metab.* 2001;21:907–913.
  67. Nilius B, Droogmans G. Ion channels and their functional role in vascular endothelium. *Physiol Rev.* 2001;81:1415–1459.
  68. Trouet D, Nilius B, Jacobs A, Remacle C, Droogmans G, Eggermont J. Caveolin-1 modulates the activity of the volume-regulated chloride channel. *J Physiol.* 1999;520(pt 1):113–119.
  69. Isshiki M, Anderson RG. Calcium signal transduction from caveolae. *Cell Calcium.* 1999;26:201–208.
  70. Isshiki M, Ando J, Yamamoto K, Fujita T, Ying Y, Anderson RG. Sites of  $Ca^{2+}$  wave initiation move with caveolae to the trailing edge of migrating cells. *J Cell Sci.* 2002;115:475–484.
  71. Isshiki M, Ando J, Korenaga R, Kogo H, Fujimoto T, Fujita T, Kamiya A. Endothelial  $Ca^{2+}$  waves preferentially originate at specific loci in caveolin-rich cell edges. *Proc Natl Acad Sci U S A.* 1998;95:5009–5014.
  72. Lisanti MP, Scherer P, Tang Z-L, Sargiacomo M. Caveolae, caveolin and caveolin-rich membrane domains: a signalling hypothesis. *Trends Cell Biol.* 1994;4:231–235.
  73. Sotgia F, Razani B, Bonuccelli G, Schubert W, Battista M, Lee H, Capozza F, Schubert AL, Minetti C, Buckley JT, Lisanti MP. Intracellular retention of glycosylphosphatidylinositol-linked proteins in caveolin-deficient cells. *Mol Cell Biol.* 2002;22:3905–3926.
  74. Vepa S, Scribner WM, Natarajan V. Activation of protein phosphorylation by oxidants in vascular endothelial cells: identification of tyrosine phosphorylation of caveolin. *Free Radic Biol Med.* 1997;22:25–35.
  75. Liu J, Oh P, Horner T, Rogers RA, Schnitzer JE. Organized endothelial cell surface signal transduction in caveolae distinct from glycosylphosphatidylinositol-anchored protein microdomains. *J Biol Chem.* 1997;272:7211–7222.
  76. Uittenbogaard A, Shaul PW, Yuhanna IS, Blair A, Smart EJ. High-density lipoprotein prevents oxidized low density lipoprotein-induced inhibition of endothelial nitric-oxide synthase localization and activation in caveolae. *J Biol Chem.* 2000;275:11278–11283.
  77. Minshall RD, Tiruppathi C, Vogel SM, Niles WD, Gilchrist A, Hamm HE, Malik AB. Endothelial cell-surface gp60 activates vesicle formation and trafficking via G<sub>i</sub>-coupled Src kinase signaling pathway. *J Cell Biol.* 2000;150:1057–1070.
  78. Yuhanna IS, Zhu Y, Cox BE, Hahner LD, Osborne-Lawrence S, Lu P, Marcel YL, Anderson RG, Mendelsohn ME, Hobbs HH, Shaul PW. High-density lipoprotein binding to scavenger receptor-BI activates endothelial nitric oxide synthase. *Nat Med.* 2001;7:853–857.
  79. Feng Y, Venema VJ, Venema RC, Tsai N, Behzadian MA, Caldwell RB. VEGF-induced permeability increase is mediated by caveolae. *Invest Ophthalmol Vis Sci.* 1999;40:157–167.
  80. Lupu C, Goodwin CA, Westmuckett AD, Emeis JJ, Scully MF, Kakkar VV, Lupu F. Tissue factor pathway inhibitor in endothelial cells colocalizes with glycolipid microdomains/caveolae: regulatory mechanism(s) of the anticoagulant properties of the endothelium. *Arterioscler Thromb Vasc Biol.* 1997;17:2964–2974.
  81. Stan RV, Ghitescu L, Jacobson BS, Palade GE. Isolation, cloning, and localization of rat PV-1, a novel endothelial caveolar protein. *J Cell Biol.* 1999;145:1189–1198.
  82. Demeule M, Jodoin J, Gingras D, Beliveau R. P-glycoprotein is localized in caveolae in resistant cells and in brain capillaries. *FEBS Lett.* 2000;466:219–224.
  83. Annabi B, Lachambre M, Bousquet-Gagnon N, Page M, Gingras D, Beliveau R. Localization of membrane-type 1 matrix metalloproteinase in caveolae membrane domains. *Biochem J.* 2001;353:547–553.
  84. Puyraimond A, Fridman R, Lemesle M, Arbeille B, Menashi S. MMP-2 colocalizes with caveolae on the surface of endothelial cells. *Exp Cell Res.* 2001;262:28–36.
  85. Igarashi J, Michel T. Agonist-modulated targeting of the EDG-1 receptor to plasmalemmal caveolae: eNOS activation by sphingosine 1-phosphate and the role of caveolin-1 in sphingolipid signal transduction. *J Biol Chem.* 2000;275:32363–32370.
  86. Chun M, Liyanage UK, Lisanti MP, Lodish HF. Signal transduction of a G protein-coupled receptor in caveolae: colocalization of endothelin and its receptor with caveolin. *Proc Natl Acad Sci U S A.* 1994;91:11728–11732.
  87. Oh P, Schnitzer JE. Segregation of heterotrimeric G proteins in cell surface microdomains. G<sub>q</sub> binds caveolin to concentrate in caveolae, whereas G<sub>i</sub> and G<sub>s</sub> target lipid rafts by default. *Mol Biol Cell.* 2001;12:685–698.
  88. Garcia-Cardena G, Oh P, Liu J, Schnitzer JE, Sessa WC. Targeting of nitric oxide synthase to endothelial cell caveolae via palmitoylation: implications for caveolae localization. *Proc Natl Acad Sci U S A.* 1996;93:6448–6453.
  89. Teubl M, Groschner K, Kohlwein SD, Mayer B, Schmidt K.  $Na^{+}/Ca^{2+}$  exchange facilitates  $Ca^{2+}$ -dependent activation of endothelial nitric-oxide synthase. *J Biol Chem.* 1999;274:29529–29535.
  90. Fujimoto T. Calcium pump of the plasma membrane is localized in caveolae. *J Cell Biol.* 1993;120:1147–1157.
  91. Schnitzer JE, Oh P, Jacobson BS, Dvorak AM. Caveolae from luminal plasmalemma of rat lung endothelium: microdomains enriched in caveolin,  $Ca^{2+}$ -ATPase, and inositol trisphosphate receptor. *Proc Natl Acad Sci U S A.* 1995;92:1759–1763.
  92. Fujimoto T, Nakade S, Miyawaki A, Mikoshiba K, Ogawa K. Localization of inositol 1,4,5-triphosphate receptor-like protein in plasmalemmal caveolae. *J Cell Biol.* 1992;119:1507–1513.
  93. McDonald KK, Zharikov S, Block ER, Kilberg MS. A caveolar complex between the cationic amino acid transporter 1 and endothelial nitric-oxide synthase may explain the 'arginine paradox.' *J Biol Chem.* 1997;272:31213–31216.
  94. Oh P, McIntosh DP, Schnitzer JE. Dynamin at the neck of caveolae mediates their budding to form transport vesicles by GTP-driven fission from the plasma membrane of endothelium. *J Cell Biol.* 1998;141:101–114.
  95. Henley JR, Krueger EW, Oswald BJ, McNiven MA. Dynamin-mediated internalization of caveolae. *J Cell Biol.* 1998;141:85–99.
  96. Park DS, Woodman SE, Schubert W, Cohen AW, Frank PG, Chandra M, Shirani J, Razani B, Tang B, Jelicks LA, Factor SM, Weiss LM, Tanowitz HB, Lisanti MP. Caveolin-1/3 double-knockout mice are viable, but lack both muscle and non-muscle caveolae, and develop a severe cardiomyopathic phenotype. *Am J Pathol.* 2002;160:2207–2217.



# Arteriosclerosis, Thrombosis, and Vascular Biology



JOURNAL OF THE AMERICAN HEART ASSOCIATION

## Caveolin, Caveolae, and Endothelial Cell Function

Philippe G. Frank, Scott E. Woodman, David S. Park and Michael P. Lisanti

*Arterioscler Thromb Vasc Biol.* 2003;23:1161-1168; originally published online April 10, 2003;

doi: 10.1161/01.ATV.0000070546.16946.3A

*Arteriosclerosis, Thrombosis, and Vascular Biology* is published by the American Heart Association, 7272  
Greenville Avenue, Dallas, TX 75231

Copyright © 2003 American Heart Association, Inc. All rights reserved.

Print ISSN: 1079-5642. Online ISSN: 1524-4636

The online version of this article, along with updated information and services, is located on the  
World Wide Web at:

<http://atvb.ahajournals.org/content/23/7/1161>

**Permissions:** Requests for permissions to reproduce figures, tables, or portions of articles originally published in *Arteriosclerosis, Thrombosis, and Vascular Biology* can be obtained via RightsLink, a service of the Copyright Clearance Center, not the Editorial Office. Once the online version of the published article for which permission is being requested is located, click Request Permissions in the middle column of the Web page under Services. Further information about this process is available in the [Permissions and Rights Question and Answer](#) document.

**Reprints:** Information about reprints can be found online at:  
<http://www.lww.com/reprints>

**Subscriptions:** Information about subscribing to *Arteriosclerosis, Thrombosis, and Vascular Biology* is online at:  
<http://atvb.ahajournals.org/subscriptions/>